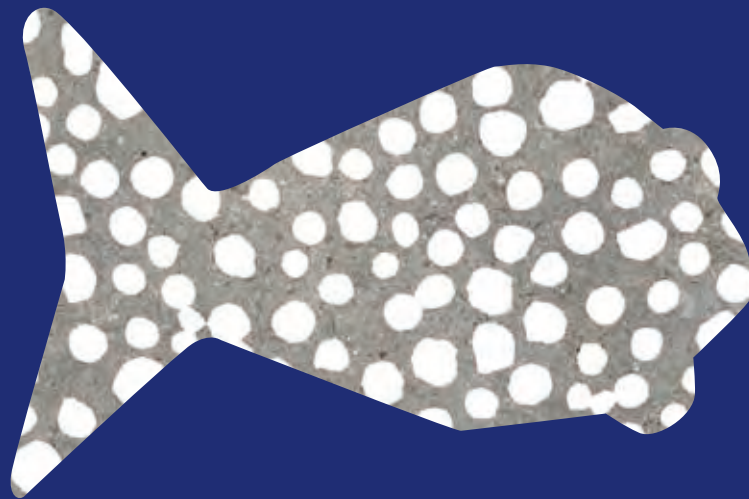
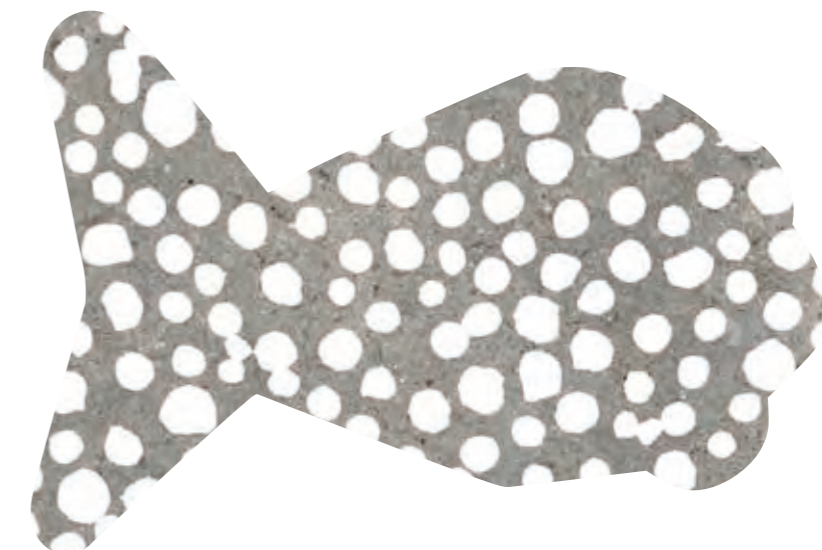


poetry  
stone



paola navone  
for  
**ABK**

**poetry  
stone**



**paola navone  
for  
ABK**

# POESIA DOMESTICA

*“Cerco sempre di promuovere l'imperfezione, anche nello sviluppo del prodotto industriale, che ha regole e processi ben definiti. I risultati sono sempre sorprendenti.”*

**“I always strive to promote imperfection, even when developing industrial products which have clearly defined rules and processes. The results are always surprising.”**

*Paola Navone*



## poetry house

PAOLA NAVONE FOR ABK

Il design è poesia applicata allo spazio, interpretazione artistica della materia, e non è un caso se i designer italiani sono ammirati nel mondo. Tra questi, Paola Navone, designer, architetto e art director milanese, si distingue per la personalità eclettica e lo spirito libero, aperto a diverse culture. Dalla collaborazione tra ABK e Studio OTTO - Paola Navone, nasce POETRY HOUSE, un progetto che esplora esperienze creative, materiali, segni grafici ispirati alle sue opere più iconiche e rappresentative. E' la scrittura di una vera e propria poetica dell'abitare, che condensa il vissuto artistico della designer e la sua storia, portandoli negli ambienti architettonici.

POETRY HOUSE intende sottolineare il valore di un percorso progettuale che conferma la presenza di ABK nel mondo del design, un viaggio che vede ora le prime tappe ed è destinato a continuare nel tempo.

Design is poetry applied to space, an artistic interpretation of matter, and it is no coincidence that Italian designers are admired all over the world. One of these is Paola Navone, a Milanese designer, architect and art director renowned for her eclectic personality, free spirit and interest in different cultures. A collaboration between ABK and Studio OTTO - Paola Navone has resulted in POETRY HOUSE, a project that explores creative experiences, materials and graphic designs inspired by her most iconic and representative works. It is an authentic poetry of living, a distillation of the personal history and artistic experience that the designer brings to architectural spaces.

POETRY HOUSE is the first step in a collaboration that will see ABK strengthen its presence in the world of design and is destined to continue in the future.



ABK, con POETRY STONE, ha vinto l'Archiproducts Design Awards 2022 nella categoria Finishes, per la qualità del prodotto e la forte identità espressiva.

La giuria A.D.A. riunisce ogni anno il meglio del design internazionale e dal 2016 celebra le migliori sinergie che prendono vita tra i professionisti della creatività e i brand più innovativi.

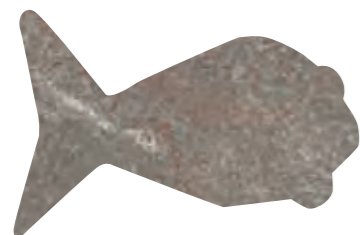
POETRY STONE from ABK was chosen as one of the winners of the Archiproducts Design Awards 2022 in the Finishes category for its quality and powerful aesthetic identity.

Each year the A.D.A. jury brings together the best of international design and since 2016 has been celebrating outstanding collaborations between creative professionals and the most innovative brands.





# poetry stone



PIASE MUD



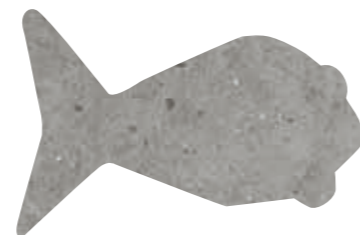
PIASE SMOKE



PIASE ASH



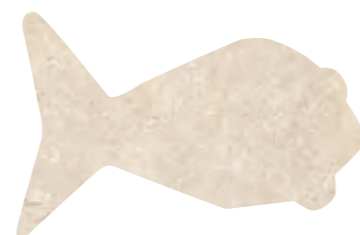
PIRENEI ECRU



PIRENEI GREY



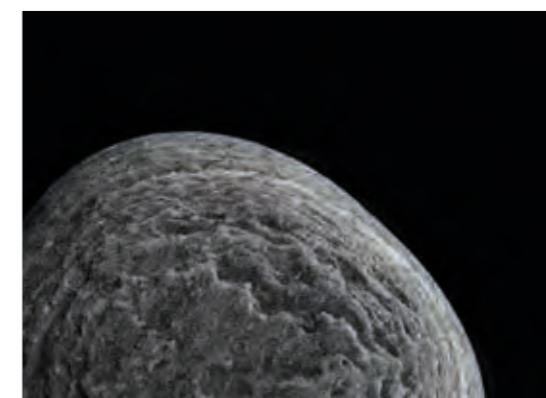
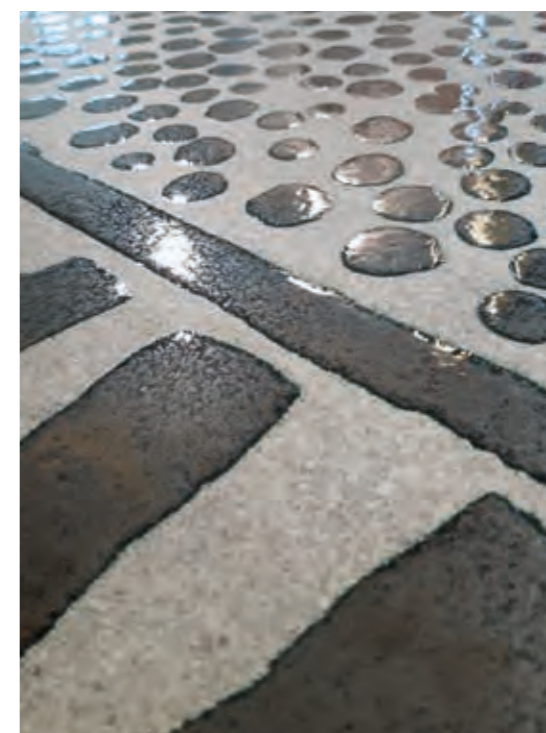
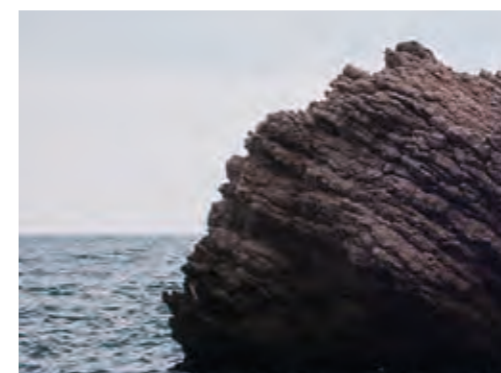
TRANI IVORY



TRANI BEIGE

POETRY STONE è una collezione-contenitore che re-interpreta l'identità naturale e primitiva della pietra. Le diverse superfici, essenziali e contemporanee, sono proposte in una vasta gamma di formati, fino alle grandi lastre, con finiture che consentono molteplici possibilità di applicazione, sia indoor che outdoor. Un progetto inedito, arricchito da elementi decorativi e texture esclusive che esprimono pienamente la visione creativa di Studio OTTO - Paola Navone, in sintonia con le qualità della ceramica ABK.

The POETRY STONE collection reinterprets the natural and primitive identity of stone. These essential, contemporary surfaces are available in a wide range of sizes including large slabs, with finishes suitable for many different indoor and outdoor applications. The collection features exclusive decorative elements and textures that combine the creative vision of Studio OTTO - Paola Navone with the distinctive qualities of ABK ceramic products.





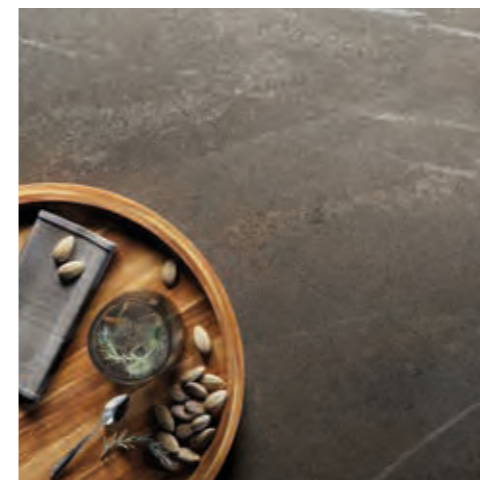
UNA COLLEZIONE,  
TRE DIVERSE PIETRE D'ISPIRAZIONE.

Guardando alle infinite possibilità offerte dal mondo delle pietre, Poetry Stone ha selezionato tre varietà, differenti per texture e colori, espressive e aperte alle sperimentazioni che caratterizzano l'universo progettuale delle collezioni ABK. L'effetto pietra, grazie a Studio OTTO - Paola Navone, diventa anche una base su cui riprodurre pattern decorativi che si distinguono per il tratto handmade, quasi imperfetto, declinati in effetti di incisione, bianche pennellate o segni metallici che ricordano le tecniche raku.

ONE COLLECTION, THREE DIFFERENT  
STONES.

Three visually striking varieties of natural stone with different textures and colours were selected for the Poetry Stone collection, all of which are ideal for the experimental approach typical of ABK. Studio OTTO - Paola Navone used the stone effect as a base for creating handmade decorations with a slightly imperfect look in the form of engraved effects, white brushstrokes or raku-style metallic designs.

piase



Piase significa Piasentina, la celebre pietra friulana che all'interno di POETRY HOUSE rappresenta l'effetto visivo, dinamico e decorativo, dei materiali venati, caratterizzati dai giochi di contrasto chiaro-scuro. L'ispirazione della pietra originaria è declinata in tre colorazioni: MUD, SMOKE e ASH per abbinare l'estetica di questo materiale ad una palette di colori contemporanea e sofisticata.

Piase refers to Piasentina, a well-known stone from the Friuli region chosen for the POETRY HOUSE collection for its dynamic and decorative veined effect and contrasting light and dark shades. The original stone is recreated in the three colour versions MUD, SMOKE and ASH, which combine the material's distinctive aesthetics with a contemporary and sophisticated colour palette.

pirenei



Pirenei, che trae il nome dal luogo d'origine in cui vengono estratte queste pietre, ha come elemento fondamentale il ciottolo. L'intrusione, l'elemento a contrasto che emerge da un fondo quasi cementizio, è il "difetto" che diventa tratto distintivo e caratterizzante delle superfici, declinate in due tonalità, ECRU e GREY.

Pirenei, named after the Pyrenees mountains where these stones are quarried, stands out for its distinctive pebble-like inclusions. These contrasting elements emerge from an almost cement-like background, a kind of defect that becomes a characteristic feature of the surfaces, available in the two colours ECRU and GREY.

trani

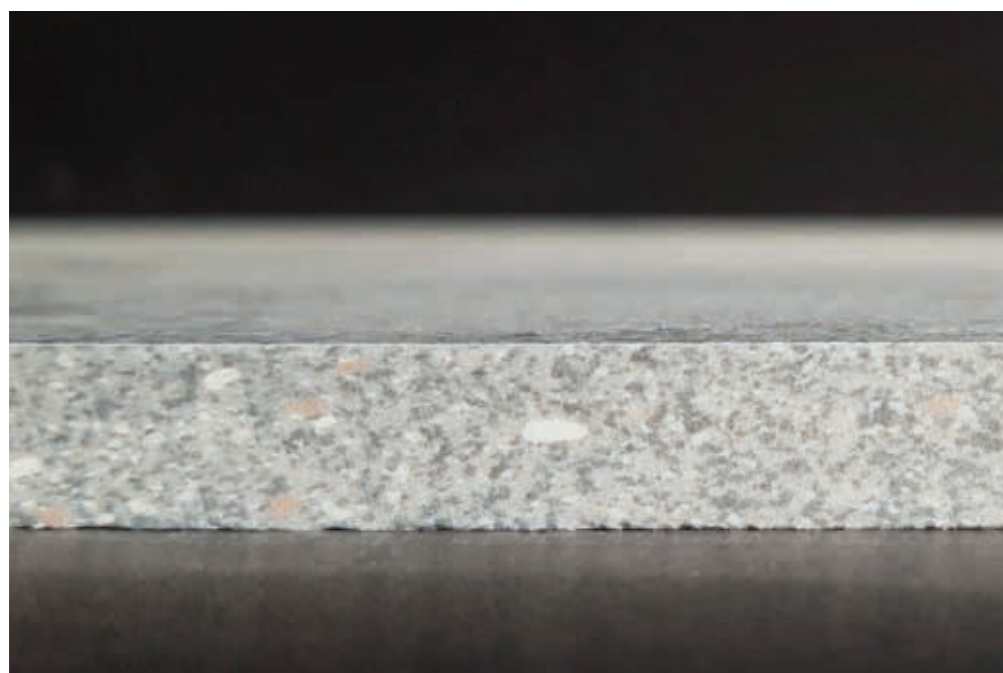


Trani evoca un certo sapore mediterraneo tipico delle pietre pugliesi, è una varietà dall'aspetto piuttosto uniforme collocabile nell'universo delle Limestones, proposta nelle due varianti, chiare e luminose, IVORY e BEIGE.

Trani evokes the Mediterranean flavour of Apulian stones. It recreates the almost uniform look of limestone and is available in the two bright, luminous versions IVORY and BEIGE.

# poetry stone

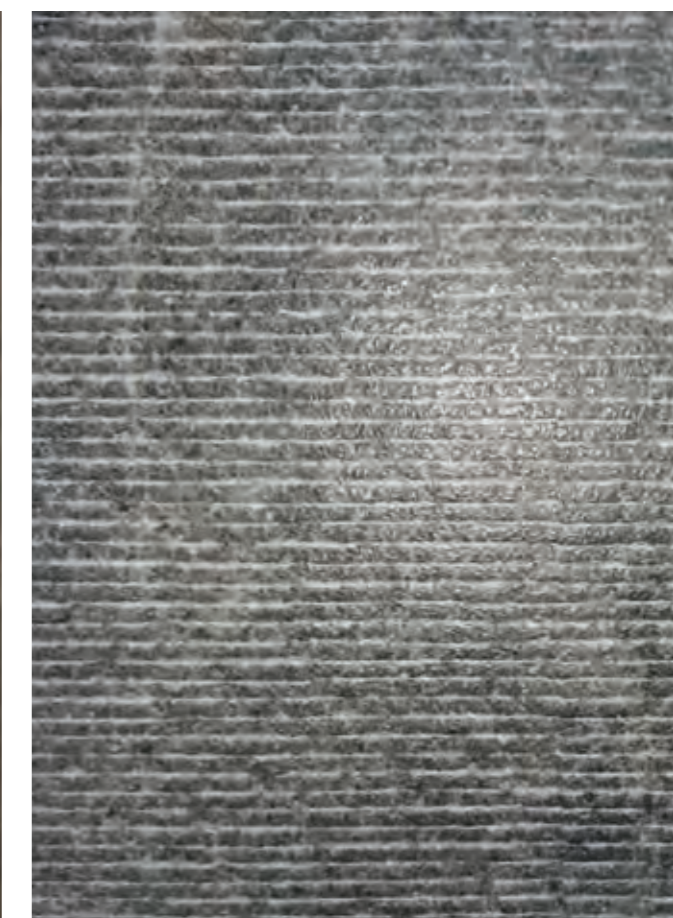
DESIGN AND TECHNICAL  
INNOVATION.



## 3D tech

La tecnologia 3D Tech consente di applicare differenti materie ceramiche, anche a spessore, in perfetta corrispondenza con la grafica sottostante, realizzata in digitale ad altissima definizione. Un processo produttivo rivoluzionario, che combina la matericità con l'estetica del prodotto, fino ad ottenere superfici dallo straordinario valore sensoriale.

The new 3D Tech technology allows thick layers of various ceramic materials to be applied in perfect alignment with the underlying graphic designs, which are created digitally with extremely high definition. This revolutionary production process combines material and aesthetic effects to create surfaces with extraordinary sensorial appeal.

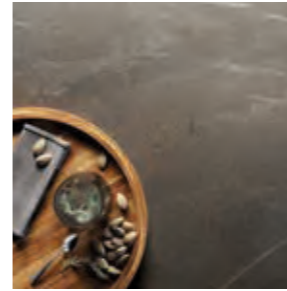
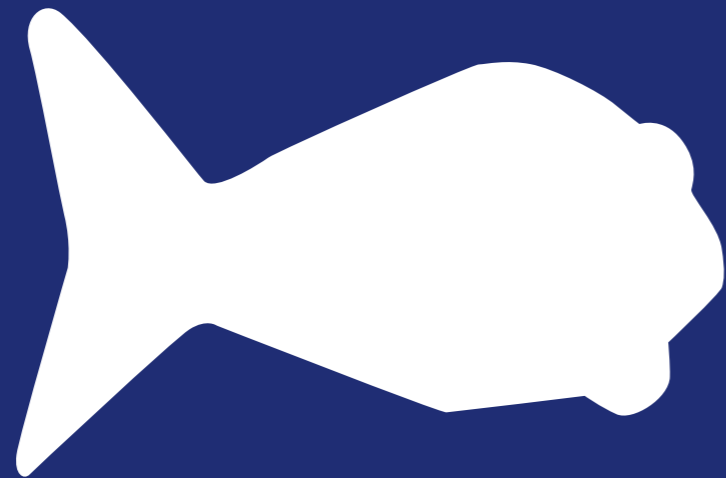


## FULLBODY3D

ABK, grazie ai più evoluti sistemi di miscelazione e pressatura degli impasti ceramici, è in grado di ricreare la complessa struttura delle pietre. L'esclusiva tecnologia FULLBODY3D si basa sulla miscelazione di materie prime a granulometria variabile e permette di ottenere ciò che la natura ha creato nei millenni, sia in superficie che nello spessore, con uno straordinario effetto di continuità tra massa e superficie.

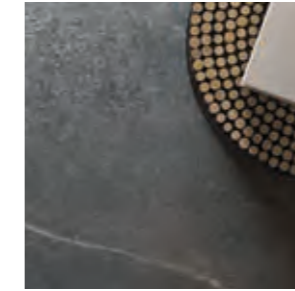
ABK uses the most advanced ceramic body mixing and pressing systems to recreate the complex structure of stone. The exclusive FULLBODY3D technology mixes together raw materials with different particle sizes to reproduce what nature has created over thousands of years, both on the surface and through the thickness of the tile. The result is an extraordinary sense of continuity between the body and the surface.

# index



PIASE MUD

**p 12**



PIASE SMOKE

**p 18**



PIASE ASH

**p 24**



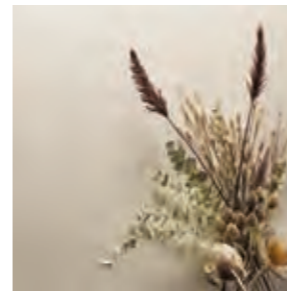
PIRENEI ECRU

**p 32**



PIRENEI GREY

**p 40**



TRANI IVORY

**p 48**



TRANI BEIGE

**p 54**



# Piase Mud

ATMOSFERA INFORMALE PER UN LOUNGE BAR DOVE PREZIOSI PATTERN ISPIRATI AL LEGNO CONVIVONO IN NATURALE ARMONIA CON LE VENATURE DELLA PIETRA.

A LOUNGE BAR WITH AN INFORMAL ATMOSPHERE WHERE EXQUISITE WOOD-INSPIRED PATTERNS BLEND HARMONIOUSLY WITH STONE VEINS.



wall  
PIASE MUD 120x280  
POETRY DECOR METAL OAK 20x20

top and table  
ABKSTONE  
PIASENTINA MUD 160x320 20 mm FULLBODY 3D

floor  
PIASE MUD 120x120

outdoor floor  
OUT.20 PIASE MUD 60x120 R11 20 mm





floor  
PIASE MUD 120x120

table  
ABKSTONE  
PIASENTINA MUD 160x320 20 mm FULLBODY 3D



wall  
DEC. METAL MUD 60x120





wall  
PIASE MUD 120x280  
DECOR METAL MUD 60x120

floor  
POETRY WOOD OAK 26,5x180

top  
ABKSTONE  
PIASENTINA MUD 20 mm  
FULLBODY 3D

bathdesign - washbasin  
PIASE MUD 120x280



# Piase Smoke

UN ACCOGLIENTE CHALET  
DALL'ATMOSFERA RICERCATA, PER  
APPREZZARE IL FASCINO DELLA  
MONTAGNA, SCEGLIE IL PERFETTO  
CONNUBIO TRA PIETRA E LEGNO.

A COSY MOUNTAIN CHALET WITH  
A SOPHISTICATED ATMOSPHERE  
ENHANCED BY A PERFECT BALANCE  
OF STONE AND WOOD.



Floor  
PIASE SMOKE 60x120





floor  
PIASE SMOKE 60x120

outdoor floor  
PIASE SMOKE 60x120 R11 8,5 mm





wall  
PIASE SMOKE 60x120  
CARVING SMOKE 60x120  
LIST. WOOD 5x40

floor  
PIASE SMOKE 60x120



# Piase Ash

LA LUCE MEDITERRANEA VALORIZZA  
UNO STUDIATO MIX DI TRAME,  
COLORI E MATERIALI, DALLO STILE  
ESSENZIALE E CHIC.

MEDITERRANEAN LIGHT COMPLEMENTS  
THE THOUGHTFULLY DESIGNED BLEND  
OF TEXTURES, COLOURS AND MATERIALS  
WITH AN ESSENTIAL, CHIC STYLE.



floor  
OUT.20 PIASE ASH R11 60x120 20 mm  
BULLNOSE PIASE ASH R11 60x120 20 mm





Floor  
PIASE ASH 120x120  
DEC CARPET PAINT ASH 120x120





floor  
PIASE ASH 120x120  
DECOR CARPET PAINT ASH 120x120





wall  
PIASE ASH 60x120

floor  
PIASE ASH 60x120

shower  
POETRY DECOR COLORS TURQUOISE 10x10



# Pirenei Ecrú

UN WELLNESS HOTEL AD ALTA QUOTA  
DALLA VISTA MOZZAFIATO, DOVE I  
MATERIALI DELLA TRADIZIONE ALPINA  
SI FONDONO PIACEVOLMENTE CON IL  
CARATTERE URBANO DELLE SUPERFICI  
INDUSTRIALI.

A WELLNESS HOTEL WITH  
BREATHTAKING MOUNTAIN VIEWS  
WHERE TRADITIONAL ALPINE MATERIALS  
BLEND PLEASANTLY WITH THE URBAN  
NATURE OF INDUSTRIAL SURFACES.



Floor  
OUT.20 PIRENEI ECRU R11 60x120 20 mm  
POETRY WOOD OAK R11 30x120 20 mm

  
**TROPICAL**  
TILE & MARBLE





wall  
INTERNO 9 RUST 120x280  
POETRY WOOD OAK 20x120

floor  
PIRENEI ECRU 60x120

bar counter  
PIRENEI ECRU 120x280  
POETRY WOOD OAK 20x120





floor  
PIRENEI ECRU 60x120

table  
ABKSTONE  
PIRENEI ECRU 160x320 12 mm FULLBODY 3D



wall  
CARVING ECRU 60x120

floor  
PIRENEI ECRU R11 60x120 8,5 mm

bathdesign - washbasin  
INTERNO 9 RUST 120x280





wall  
CARVING ECRU 60x120  
INTERNO 9 RUST 120x280

floor  
PIRENEI ECRU R11 60x120 8,5 mm

bathdesign - washbasin  
INTERNO 9 RUST 120x280



# Pirenei Grey

GLI ACCENTI BRUTALISTI RICORDANO L'IDENTITÀ INDUSTRIALE DEL LUOGO, CONVERTITO IN UNO SPAZIO RESIDENZIALE E VALORIZZATO DALLE DECORAZIONI GEOMETRICHE A EFFETTO MATERICO.

BRUTALIST ACCENTS EVOKE THE INDUSTRIAL IDENTITY OF THE LOCATION, CONVERTED INTO A RESIDENTIAL SPACE AND ENHANCED BY GEOMETRIC DECORATIONS WITH A MATERIAL EFFECT.







wall  
PIRENEI GREY 120x280

floor  
PIRENEI GREY 120x120  
FRINGE GREY 60x60  
CARPET GREY 60x60

kitchen volume, top and table  
ABKSTONE  
PIRENEI GREY 160x320 12 mm / 20 mm  
FULLBODY 3D





wall  
LINES GREY 60x120  
WIDE & STYLE MINI SNOW 60x120

shower and top  
PIRENEI GREY 120x280

  
floor  
PIRENEI GREY 60x120  
**TROPICAL**  
LINES GREY 60x120  
**TILE & MARBLE**





wall  
DEC. METAL GREY 60x120



wall  
PIRENEI GREY 60x120  
MATITA ALLUMINIO WHITE 0,5x120

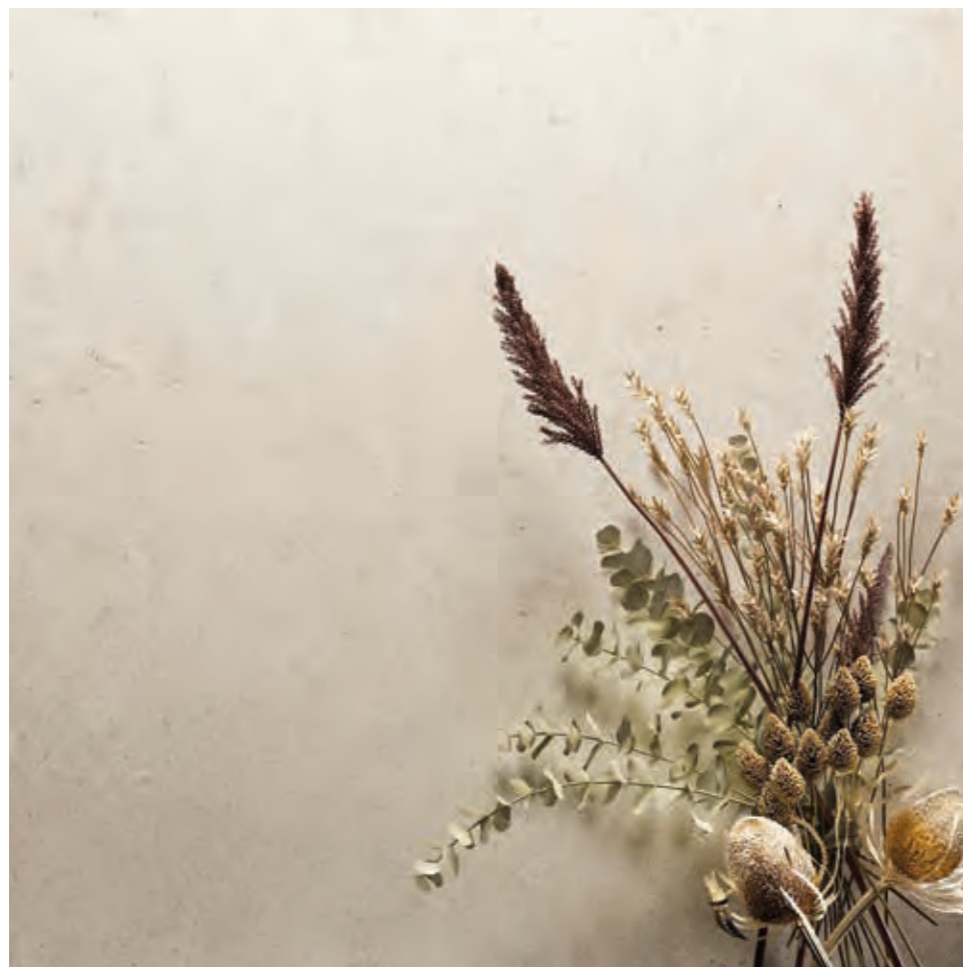
floor  
PIRENEI GREY 60x120  
FRINGE GREY 60x60  
CARPET GREY 60x60



# Trani Ivory

UNA CASA DALL'ELEGANZA CLASSICO-CONTEMPORANEA DOVE IL LUSO E LA RICERCATEZZA DI CERTE FINITURE INCONTRANO L'ESTETICA PIU' RILASSATA DELLA PIETRA E DEL LEGNO.

AN ELEGANT, CONTEMPORARY CLASSIC HOME WHERE THE LUXURY AND SOPHISTICATION OF CERTAIN FINISHES CONTRAST WITH THE MORE RELAXED AESTHETICS OF STONE AND WOOD.



floor  
TRANI IVORY 120x120





floor  
TRANI IVORY 120x120

kitchen table  
PIASE MUD 120x280

kitchen top and backsplash  
ABKSTONE  
PIASENTINA MUD 160x320 12 mm / 20 mm





wall  
 TRANI IVORY 60x120  
 SENSI SIGNORIA ROMA IMPERIALE NAT 60x120

floor  
 POETRY WOOD GOLD 26,5x180



wall  
 TRANI IVORY 60x120  
 POETRY WOOD MUD 20x120  
 POETRY WOOD DEC. METAL MUD 20x120

floor  
 TRANI IVORY 60x120



# Trani Beige

IN UN'ANTICA MASSERIA DOVE IL TEMPO SEMBRA ESSERSI FERMATO, GLI AMBIENTI CONSERVANO L'ATMOSFERA CALDA E I DETTAGLI RUSTICI, DANDO SPAZIO A PATTERN E SUPERFICI DALLO STILE INFORMALE.

IN AN OLD FARMHOUSE WHERE TIME SEEMS TO STAND STILL, THE INTERIORS RETAIN THEIR WARM ATMOSPHERE AND RUSTIC DETAILS WHILE ADOPTING PATTERNS AND SURFACES WITH AN INFORMAL STYLE.



floor  
TRANI BEIGE 60x120

table  
ABKSTONE  
TRANI BEIGE 160x320 20 mm





floor  
TRANI BEIGE 60x120  
STAMP BEIGE 60x120

table  
ABKSTONE  
TRANI BEIGE 160x320 20 mm

outdoor floor  
TRANI BEIGE R11 60x120 8,5 mm





wall  
 TRANI BEIGE 60x120  
 STAMP BEIGE 60x120

floor  
 POETRY WOOD ECRU 20x120

bathdesign - washbasin top  
 TRANI BEIGE 120x280



wall  
 TRANI BEIGE 120x280  
 POETRY WOOD ECRU 20x120

floor  
 POETRY DECOR STAMP PAINT VERDIGRIS 20x20












wall and pool  
POETRY DECOR STAMP PAINT VERDIGRIS 20x20

floor and pool  
TRANI BEIGE R11 60x120 8,5 mm

# poetry stone

## COLOUR AND SIZE CHART

							
	PIASE MUD	PIASE SMOKE	PIASE ASH	PIRENEI ECRU	PIRENEI GREY	TRANI IVORY	TRANI BEIGE
6 mm							
120x280 48"x112" nat rett.	•				•		•
8,5 mm							
120x120 48"x48" nat rett.	•	•	•	•	•	•	•
60x120 24"x48" nat rett.	•	•	•	•	•	•	•
60x60 24"x24" nat rett.	•	•	•	•	•	•	•
60x120 24"x48" R11 rett.	•	•	•	•	•	•	•
20 mm							
60x120 24"x48" R11 rett.	•		•	•	•		•



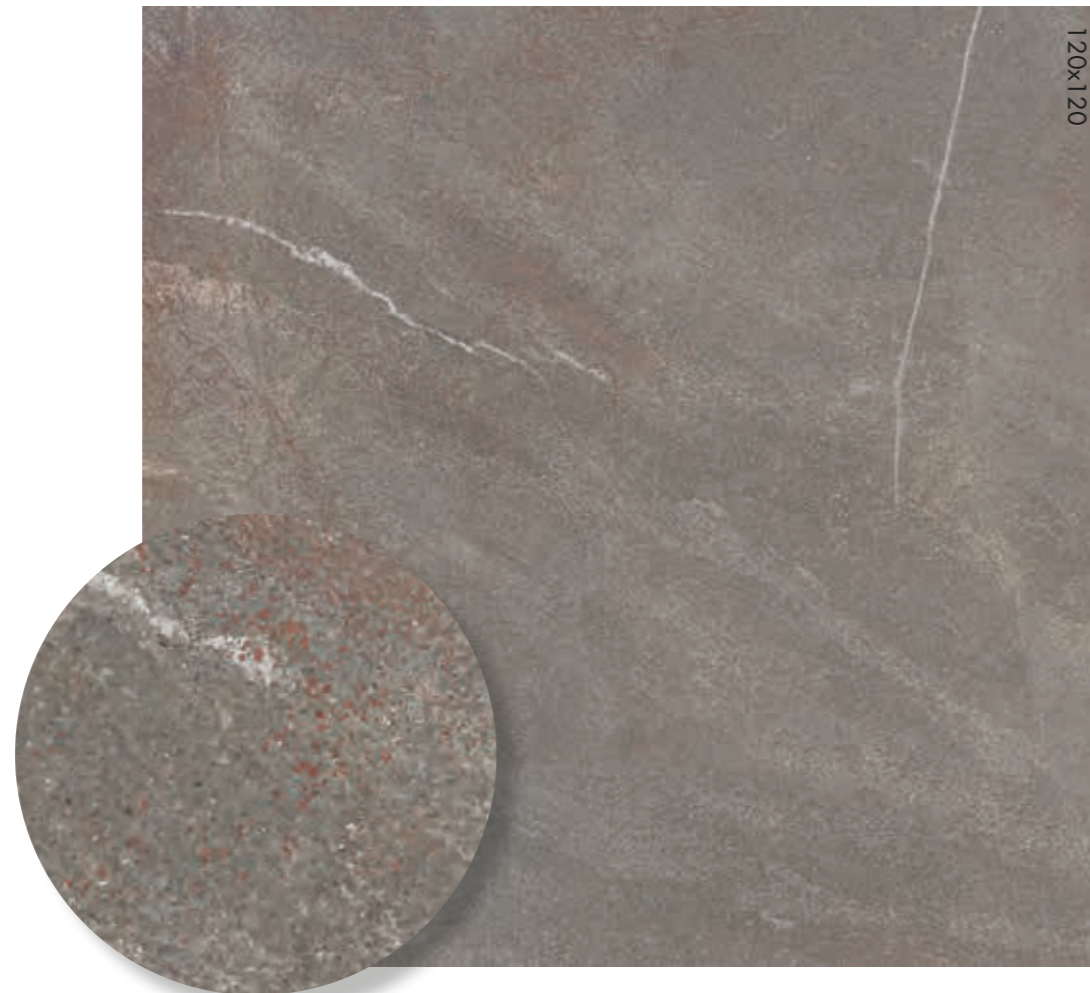
# POETRY STONE

## PIASE MUD

<b>6 mm</b>			
120x280	nat rett.		<b>0010167</b>
<b>8,5 mm FULLBODY3D</b>			
120x120	nat rett.	P.tech R10 C	<b>0010178</b>
60x120	nat rett.	P.tech R10 C	<b>0010182</b>
60x60	nat rett.	P.tech R10 C	<b>0010236</b>
60x120	nat rett.	P.tech R11	<b>0010187</b>
<b>20 mm OUT.20</b>			
60x120	nat rett.	P.tech R11	<b>0010206</b>

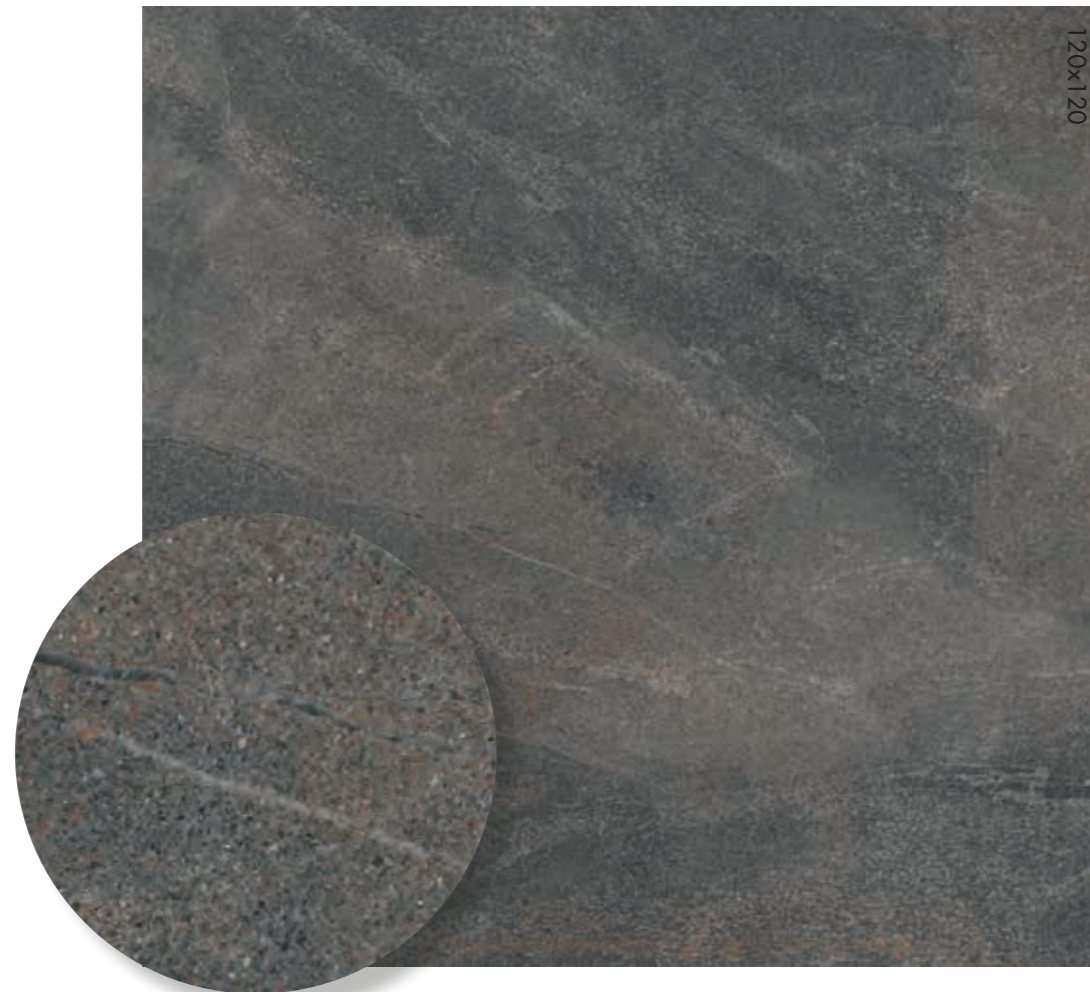
## ABKSTONE

FULLBODY 3D			
163,5x323	nat.	<b>0010834</b>	± 12 mm
FULLBODY 3D			
163,5x323	nat.	<b>0010836</b>	± 20 mm



## PIASE SMOKE

<b>8,5 mm FULLBODY3D</b>			
120x120	nat rett.	P.tech R10 C	<b>0010179</b>
60x120	nat rett.	P.tech R10 C	<b>0010183</b>
60x60	nat rett.	P.tech R10 C	<b>0010237</b>
60x120	nat rett.	P.tech R11	<b>0010241</b>



## PIASE ASH

<b>8,5 mm FULLBODY3D</b>			
120x120	nat rett.	P.tech R10 C	<b>0010176</b>
60x120	nat rett.	P.tech R10 C	<b>0010180</b>
60x60	nat rett.	P.tech R10 C	<b>0010234</b>
60x120	nat rett.	P.tech R11	<b>0010186</b>
<b>20 mm OUT.20</b>			
60x120	nat rett.	P.tech R11	<b>0010205</b>





# POETRY STONE

## PIRENEI ECRU

<b>8,5 mm</b>				<b>FULLBODY3D</b>			
120x120	nat reft.	P.tech R10 C	<b>0010777</b>				
60x120	nat reft.	P.tech R10 C	<b>0010780</b>				
60x60	nat reft.	P.tech R10 C	<b>0010782</b>				
60x120	nat reft.	P.tech R11	<b>0010531</b>				
<b>20 mm OUT.20</b>							
60x120	nat reft.	P.tech R11	<b>0006354</b>				

### ABKSTONE

<b>FULLBODY 3D</b>			
163,5x323 nat.	<b>0008471</b>	± 12 mm	
<b>FULLBODY 3D</b>			
163,5x323 nat.	<b>0008469</b>	± 20 mm	



## PIRENEI GREY

<b>6 mm</b>							
120x280	nat reft.		<b>0008672</b>				
<b>8,5 mm</b>				<b>FULLBODY3D</b>			
120x120	nat reft.	P.tech R10 C	<b>0010776</b>				
60x120	nat reft.	P.tech R10 C	<b>0010778</b>				
60x60	nat reft.	P.tech R10 C	<b>0010781</b>				
60x120	nat reft.	P.tech R11	<b>0010530</b>				
<b>20 mm OUT.20</b>							
60x120	nat reft.	P.tech R11	<b>0006356</b>				
120x120	nat reft.	P.tech R11	<b>0012895</b>				

### ABKSTONE

<b>FULLBODY 3D</b>			
163,5x323 nat.	<b>0008470</b>	± 12 mm	
<b>FULLBODY 3D</b>			
163,5x323 nat.	<b>0008464</b>	± 20 mm	



## TRANI BEIGE

<b>6 mm</b>							
120x280	nat reft.		<b>0010533</b>				
<b>8,5 mm</b>				<b>FULLBODY3D</b>			
120x120	nat reft.	P.tech R10 C	<b>0010536</b>				
60x120	nat reft.	P.tech R10 C	<b>0010538</b>				
60x60	nat reft.	P.tech R10 C	<b>0010540</b>				
60x120	nat reft.	P.tech R11	<b>0010544</b>				
<b>20 mm OUT.20</b>							
60x120	nat reft.	P.tech R11	<b>0010632</b>				
120x120	nat reft.	P.tech R11	<b>0012896</b>				

### ABKSTONE

163,5x323 nat.	<b>0009274</b>	± 12 mm	
163,5x323 nat.	<b>0009602</b>	± 20 mm	



## TRANI IVORY

<b>8,5 mm</b>							
120x120	nat reft.	P.tech R10 C	<b>0010537</b>				
60x120	nat reft.	P.tech R10 C	<b>0010539</b>				
60x60	nat reft.	P.tech R10 C	<b>0010541</b>				
60x120	nat reft.	P.tech R11	<b>0010545</b>				

### ABKSTONE

163,5x323 nat.	<b>0010833</b>	± 12 mm	
163,5x323 nat.	<b>0010835</b>	± 20 mm	







# POETRY STONE

DECORI DA RIVESTIMENTO E PAVIMENTO - WALL AND FLOOR DECORS 8,5 mm




60x120  2  
**CARVING SMOKE** **3D tech**  
**0010802** nat. rett.  
 (piase smoke)  
 (vendita al Mq / Sale per Sqm)




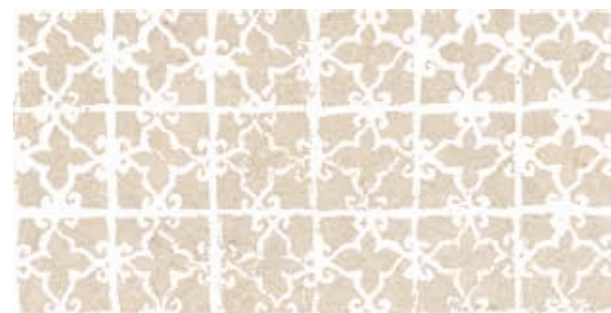
60x120  2  
**CARVING ECRU** **3D tech**  
**0010803** nat. rett.  
 (pirenei ecru)  
 (vendita al Mq / Sale per Sqm)




60x120  2  
**TRACES MUD** **3D tech**  
**0010190** nat. rett.  
 (piase mud)  
 (vendita al Mq / Sale per Sqm)



60x120  2  
**LINES GREY** **3D tech**  
**0011098** nat. rett.  
 (pirenei grey)  
 (vendita al Mq / Sale per Sqm)



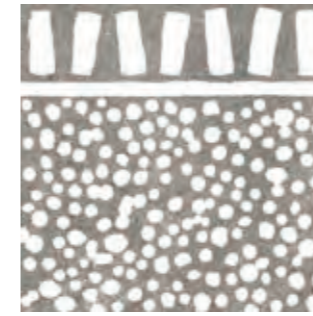
60x120  2  
**STAMP BEIGE** **3D tech**  
**0011099** nat. rett.  
 (trani beige)  
 (vendita al Mq / Sale per Sqm)



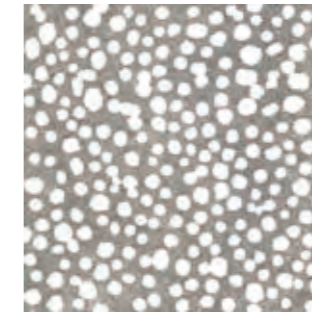
wall  
 TRACES MUD 60x120  
 PIASE MUD 60x120

Articolo composto da pattern grafici diversi che non prevedono agganci tra loro e miscelati in modo casuale in fase di inscatolamento. Non si garantisce pertanto la presenza costante di tutti i soggetti all'interno delle confezioni.  
 This article comes in several different versions with unconnected patterns that are mixed randomly at the time of packaging. There is therefore no guarantee that all patterns will be present in any individual box.

DECORI DA PAVIMENTO - FLOOR DECORS 8,5 mm



60x60  3  
**FRINGE GREY** **3D tech**  
**0011100** nat. rett.  
 (pirenei grey)  
 (vendita al Mq / Sale per Sqm)



60x60  3  
**CARPET GREY** **3D tech**  
**0011101** nat. rett.  
 (pirenei grey)  
 (vendita al Mq / Sale per Sqm)

## 3D tech

La nuova tecnologia 3D Tech consente di applicare differenti materie ceramiche, anche a spessore, in perfetta corrispondenza con la grafica sottostante, realizzata in digitale ad altissima definizione. Un processo produttivo rivoluzionario, che combina la matericità con l'estetica del prodotto, fino ad ottenere superfici dallo straordinario valore sensoriale.  
 The new technology 3D Tech is able to apply different ceramic materials, even within thickness, integrating them perfectly with the underlying graphics, made using highdefinition digital technology. A revolutionary production process that combines the textures with the aesthetics of the product, resulting in surfaces of outstanding sensory value.

DECORI DA RIVESTIMENTO - WALL DECORS 8,5 mm



60x120  1  
 • **DEC. METAL MUD**  
**0010199** nat. rett.  
 (piase mud)  
 (vendita al Pezzo / Sale per Piece)



60x120  1  
 • **DEC. METAL GREY**  
**0011096** nat. rett.  
 (pirenei grey)  
 (vendita al Pezzo / Sale per Piece)



60x120  1  
 • **DEC. METAL BEIGE**  
**0011097** nat. rett.  
 (trani beige)  
 (vendita al Pezzo / Sale per Piece)

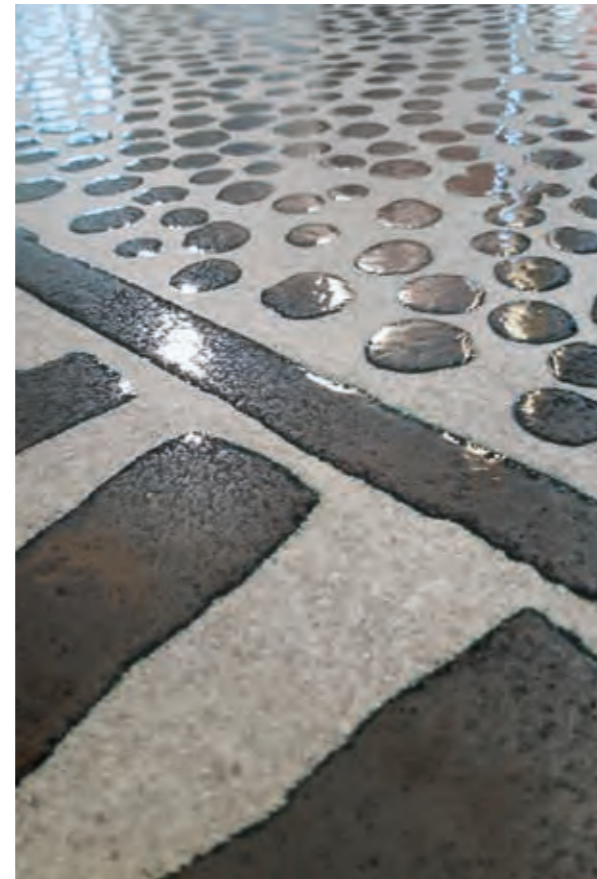
## Articoli realizzati con metalli / Items produced with metals

• Metalli. Si consiglia di pulire la superficie senza utilizzare prodotti contenenti sostanze abrasive per non alterare la brillantezza del metallo.  
 Metal. Do not use products containing abrasive substances to clean the decorative element so as not to affect the shine of the metal.



# POETRY STONE

DECORI DA PAVIMENTO ON DEMAND - ON DEMAND FLOOR DECORS 8,5 mm



floor  
DEC. CARPET PAINT (PIASE MUD)

floor  
DEC. CARPET METAL (PIASE ASH)

## DEC. CARPET PAINT

### ON DEMAND:

Decorazione white su fondo POETRY STONE a scelta.  
White decoration on POETRY STONE colour of your choice

120x120	nat rett.	soggetto 1	0010208
120x120	nat rett.	soggetto 2	0010209
120x120	nat rett.	soggetto 3	0010210
120x120	nat rett.	soggetto 4	0010211
120x120	nat rett.	soggetto 5	0010212
120x120	nat rett.	soggetto 6	0010213

(vendita al Pezzo / Sale per Piece)

## DEC. CARPET METAL

### ON DEMAND:

Decorazione metal su fondo POETRY STONE a scelta.  
Metal decoration on POETRY STONE colour of your choice

* 120x120	nat rett.	soggetto 1	0010215
* 120x120	nat rett.	soggetto 2	0010216
* 120x120	nat rett.	soggetto 3	0010217
* 120x120	nat rett.	soggetto 4	0010218
* 120x120	nat rett.	soggetto 5	0010219
* 120x120	nat rett.	soggetto 6	0010220

(vendita al Pezzo / Sale per Piece)

Articoli con ripresa grafica tra soggetti adiacenti contenuta entro una tolleranza massima di 3 mm. Items with a graphic clearance among the subjects side by side ranging within 3 mm.

### Articoli realizzati con metalli / Items produced with metals

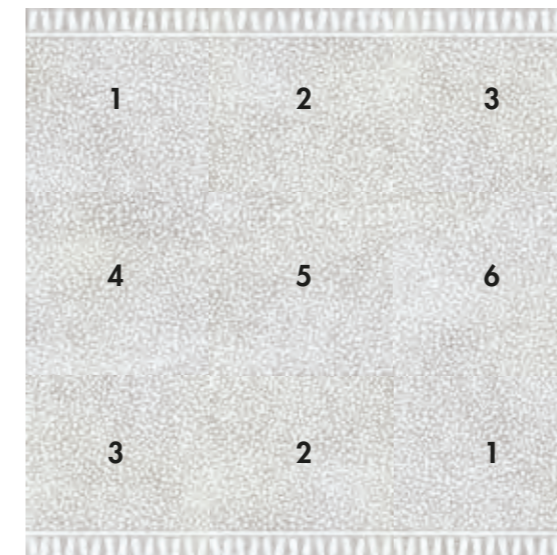
\* Metalli. Si consiglia di pulire la superficie senza utilizzare prodotti contenenti sostanze abrasive per non alterare la brillantezza del metallo.  
Metal. Do not use products containing abrasive substances to clean the decorative element so as not to affect the shine of the metal.

DEC. CARPET 120x120 (6 SOGGETTI DIVERSI / 6 DIFFERENT PATTERNS)

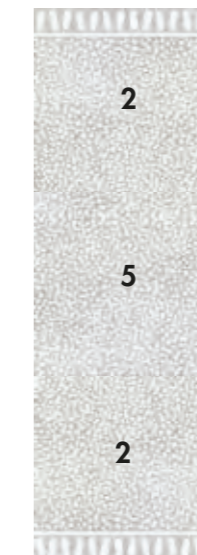


es: Poetry stone carpet paint ash 120x120 ( 6 sogg. )

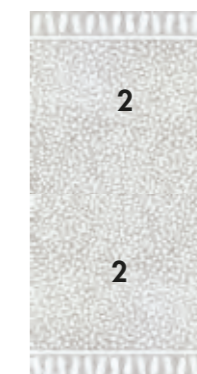
## CONSIGLI DI POSA - LAYING ADVICE



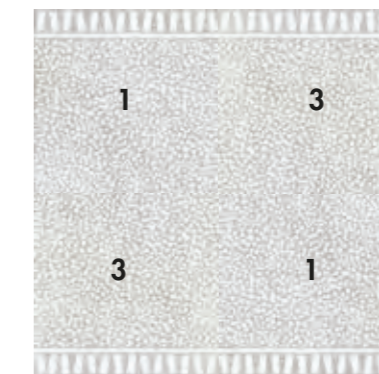
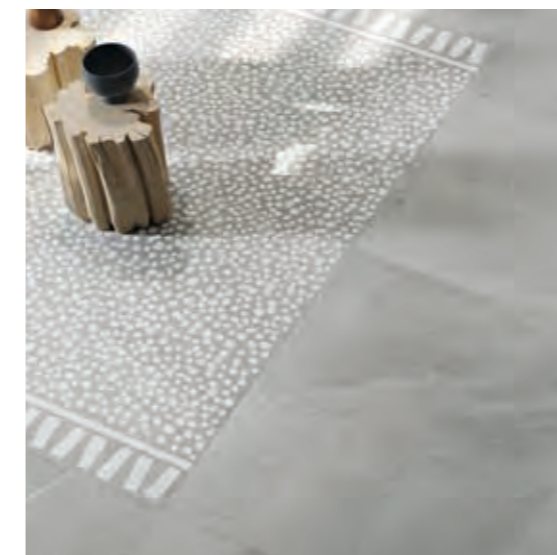
A (360x360)



B (120x360)



C (120x240)


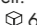
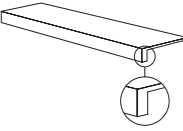



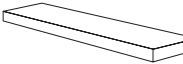



D (240x240)





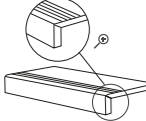







floor  
DEC. CARPET PAINT 120x120 (PIASE ASH) POSA D



# POETRY STONE

PEZZI SPECIALI / SPECIAL TRIMS 8,5 mm	PIASE MUD	PIASE SMOKE	PIASE ASH	PIRENEI ECRU	PIRENEI GREY	TRANI IVORY	TRANI BEIGE
 BATTISCOPIA nat rett. 5,5x120  6	0010547	0010548	0010546	0010784	0010783	0010550	0010549
 GRADONE TOP nat rett. 32x120x4,5x2  1	0010552	0010553	0010551	0010786	0010785	0010555	0010554
 ANGOLARE TOP SX nat rett. 32x120x4,5x2  1	0010557	0010559	0010556	0010788	0010787	0010561	0010560
 ANGOLARE TOP DX nat rett. 32x120x4,5x2  1	0010563	0010564	0010562	0010790	0010789	0010566	0010565

## OUT.20 R11

PEZZI SPECIALI / SPECIAL TRIMS 20 mm	PIASE MUD	PIASE SMOKE	PIASE ASH	PIRENEI ECRU	PIRENEI GREY	TRANI IVORY	TRANI BEIGE
 BULLNOSE rett. 60x120  1	0010573	-	0010572	0011102	0007836	-	0010633
 ELEMENTO L rett. 15x60x5  2	0010616	-	0010615	0006357	0006359	-	0010634
 ELEMENTO L GRIP rett. 15x60x5  2	0010618	-	0010617	0011103	0007073	-	0010635
 GRIGLIA rett. 15x60  4	0010620	-	0010619	0006360	0006362	-	0010636
 ANG. GRIGLIA SX rett. 15x60  4	0010622	-	0010621	0006363	0006365	-	0010637
 ANG. GRIGLIA DX rett. 15x60  4	0010624	-	0010623	0006366	0006368	-	0010638

## MATITE ALLUMINIO - ALUMINIUM STRIPS

Articoli realizzati in alluminio anodizzato per l'uso a parete, adatti a raccordare piastrelle di diverso spessore (8,5/7/6 mm).  
Anodized Aluminium strips for use between wall tiles of different thicknesses (8,5/7/6 mm).



MATITA ALLUMINIO 0,5x120  4  
Parte superiore arrotondata / Rounded top.

 MATITA ALLUMINIO 0000086

Parte superiore arrotondata e colorata con resine acriliche.  
Rounded top colored with acrylic resins.

 MATITA ALLUM. ORO 0008535

 MATITA ALLUM. RAME SCURO 0008534

 MATITA ALLUM. WHITE 0000087

 MATITA ALLUM. TERRACOTTA 0008530

 MATITA ALLUM. BLU 0008532

 MATITA ALLUM. VERDE 0008531

 MATITA ALLUM. ARDESIA 0008533

 MATITA ALLUM. BLACK 0000088



MATITA ALLUMINIO 0,5x120  4  
Parte superiore piatta colorata in bagno galvanico / Flat top colored in galvanic bath.

 MATITA ALLUM. BRONZO 0000557

 MATITA ALLUM. RAME 0000556

 5x40  4  
\* LISTELLO WOOD DKR51055 nat. rett.

\* Antico legno alpino recuperato da costruzioni dismesse e trattato per l'utilizzo in parete e a pavimento. Ogni pezzo è unico e irripetibile per grafica e colore.  
Antique alpin wood, recovered from discontinued buildings and treated for floor and wall use. Every single piece turns out to be different and unique in terms of graphic and color.

## IMBALLI - PACKAGING

F.to nominale Nominal size	Finitura Finish	Spessore Thickness	F.to reale (mm) Work size (mm)	Imballo Packing	Pz/Scat. Pcs/Box	Mq/Scat. Sqm/Box	Kg/Scat. Kg/Box	Scat./Imb. Box/Packing	Pz Totali Pcs Total	Mq totali Sqm total	Kg Imb. Kg Packing	Kg Totali Kg Total
120x280 48"x112"	rett	6	1194x2800	Cassa Crate	-	-	-	-	20	67,20	95	1.104
				Cavalletto Rack pallet	-	-	-	-	36	121,00	120	1.935
				Cavalletto container Container Rack pallet	-	-	-	-	36	121,00	140	1.955
120x120 48"x48"	rett.	8,5	1194x1194	Pallet con sponde Pallet with sides	2	2,88	57,60	16	32	46,08	40	962
60x120 24"x48"	rett.	8,5	596x1194	pallet	2	1,44	28,80	30	60	43,20	20	884
60x60 24"x24"	rett.	8,5	596x596	pallet	3	1,08	21,60	40	120	43,20	20	884
60x120 24"x48"	rett.	20	596x1194	pallet	1	0,72	32,80	30	30	21,60	20	1.004

L'unità minima di vendita per tutti gli articoli (fondi, decori e pezzi speciali) è la scatola completa. / The minimum sales quantity for all items (plain tiles, decorations and special trims) is one full box.  
I dati relativi agli imballi sono aggiornati al momento della stampa del catalogo e pertanto possono subire variazioni nel corso del tempo. / Data referring to packaging have been update at time of printing; the actual data may be slightly different.  
Pezzi speciali e decori per effetto delle lavorazioni, possono presentare variazioni di tonalità. / Due to working process special trims and decors, may show variation in tonality.



## CARATTERISTICHE TECNICHE TECHNICAL FEATURES

### GRES PORCELLANATO TUTTA MASSA - FULL BODY PORCELAIN

CLASSIFICAZIONE SECONDO NORME UNI EN 14411 (ISO 13006) ALLEGATO G-Gruppo Bla UGL  
CLASSIFICATION IN ACCORDANCE WITH UNI EN 14411 (ISO 13006) ANNEX G-Group Bla UGL

### OUT.20 GRES PORCELLANATO A MASSA COLORATA - OUT.20 FULL BODY COLORED PORCELAIN

CLASSIFICAZIONE SECONDO NORME UNI EN 14411 (ISO 13006) ALLEGATO G-Gruppo Bla GL  
CLASSIFICATION IN ACCORDANCE WITH UNI EN 14411 (ISO 13006) ANNEX G-Group Bla GL

PROPRIETÀ FISICO-CHIMICHE PHYSICAL-CHEMICAL PROPERTIES	NORMA NORM	VALORE PRESCRITTO DALLE NORME VALUE PRESCRIBED FROM THE NORMS	* VALORE ABK ABK VALUE nat. 6 mm	* VALORE ABK ABK VALUE nat. P.Tech 8,5 mm	* VALORE ABK ABK VALUE R11 8,5 mm	* VALORE ABK ABK VALUE OUT.20 R11 P.Tech 20 mm
LUNGHEZZA E LARGHEZZA DIMENSIONE MEDIA DI OGNI PIASTRELLA LENGTH AND WIDTH OF THE AVERAGE-SIZES TILE	UNI EN ISO 10545/2	± 0,5%	CONFORME ACCORDING TO	CONFORME ACCORDING TO	CONFORME ACCORDING TO	CONFORME ACCORDING TO
SPESSORE THICKNESS	UNI EN ISO 10545/2	± 5%	CONFORME ACCORDING TO	CONFORME ACCORDING TO	CONFORME ACCORDING TO	CONFORME ACCORDING TO
RETTILINEARITÀ SPIGOLI WARPAGES OF EDGES	UNI EN ISO 10545/2	± 0,5%	CONFORME ACCORDING TO	CONFORME ACCORDING TO	CONFORME ACCORDING TO	CONFORME ACCORDING TO
ORTOGONALITÀ WEDGING	UNI EN ISO 10545/2	± 0,6%	CONFORME ACCORDING TO	CONFORME ACCORDING TO	CONFORME ACCORDING TO	CONFORME ACCORDING TO
PLANARITÀ FLATNESS	UNI EN ISO 10545/2	± 0,5%	CONFORME ACCORDING TO	CONFORME ACCORDING TO	CONFORME ACCORDING TO	CONFORME ACCORDING TO
ASSORBIMENTO D'ACQUA WATER ABSORPTION	UNI EN ISO 10545/3	E ≤ 0,5%	CONFORME ACCORDING TO	CONFORME ACCORDING TO	CONFORME ACCORDING TO	CONFORME ACCORDING TO
RESISTENZA ALLA FLESSIONE BENDING STRENGTH	UNI EN ISO 10545/4	≥ 35 N/mm <sup>2</sup>	CONFORME ACCORDING TO	CONFORME ACCORDING TO	CONFORME ACCORDING TO	CONFORME ACCORDING TO
FORZA DI ROTTURA BREAKING STRENGTH	UNI EN ISO 10545/4	≥ 1300 N	CONFORME ACCORDING TO	CONFORME ACCORDING TO	CONFORME ACCORDING TO	CONFORME ACCORDING TO
RESISTENZA ALL'ABRASIONE PROFONDA DELLE PIASTRELLE NON SMALTATE RESISTANCE TO DEEP ABRASION OF UNGLAZED TILES	UNI EN ISO 10545/6	< 175 mm <sup>3</sup>	CONFORME ACCORDING TO	CONFORME ACCORDING TO	CONFORME ACCORDING TO	CONFORME ACCORDING TO
RESISTENZA ALL'ABRASIONE SUPERFICIALE PER PIASTRELLE SMALTATE ABRASION RESISTANCE FOR GLAZED TILES	UNI EN ISO 10545/7	DICHIARATO DALL'AZIENDA PRODUTTRICE DECLARED BY THE MANUFACTURING COMPANY	-	-	-	IN FUNZIONE DELLA DESTINAZIONE D'USO ACCORDING TO THE DESTINATION OF FINAL USE
RESISTENZA AGLI SBALZI TERMICI THERMAL SHOCK RESISTANCE	UNI EN ISO 10545/9	RICHIESTA REQUIRED	RESISTE RESISTS	RESISTE RESISTS	RESISTE RESISTS	RESISTE RESISTS
RESISTENZA AL GELO FROST RESISTANCE	UNI EN ISO 10545/12	RICHIESTA REQUIRED	INGELIVO FROST PROOF	INGELIVO FROST PROOF	INGELIVO FROST PROOF	INGELIVO FROST PROOF
RESISTENZA ALL'ATTACCO CHIMICO CHEMICAL RESISTANCE	UNI EN ISO 10545/13	MIN UB	CONFORME ACCORDING TO	CONFORME ACCORDING TO	CONFORME ACCORDING TO	-
		MIN GB	-	-	-	CONFORME ACCORDING TO
RESISTENZA ALLE MACCHIE RESISTANCE TO STAINING	UNI EN ISO 10545/14	UGL VALORE DA DICHIARARE VALUE to declare	-	-	-	-
		GL ≥ MINIMO CLASSE 3	-	-	-	CONFORME ACCORDING TO
RESISTENZA ALLO SCIVOLAMENTO SLIP RESISTANCE	B.C.R.A. C.A.	μ 0,19 SCIVOLOSITÀ PERICOLOSA - DANGEROUSLY SLIPPERY 0,20 < μ < 0,39 SCIVOLOSITÀ ECCESSIVA - EXCESSIVELY SLIPPERY	> 0,40	> 0,40	> 0,40	> 0,40
	B.C.R.A. G.B.	0,40 < μ < 0,74 ATTRITO SODDISFACENTE - SATISFACTORY GRIP μ 0,75 ATTRITO ECCELLENTE - EXCELLENT GRIP	> 0,40	> 0,40	> 0,40	> 0,40
	ASTM C 1028 (S.C.O.F.)	SLIP RESISTANT (> 0,60)	> 0,60 DRY	> 0,60 DRY	> 0,60 DRY	> 0,60 DRY
			> 0,60 WET	> 0,60 WET	> 0,60 WET	> 0,60 WET
	DIN 51130	IN FUNZIONE DELL'AMBIENTE O DELLA ZONA DI LAVORO BASING ON THE ENVIRONMENT OR THE WORKING AREA	R10	R10	R11	R11
	DIN 51097	-	A+B	A+B+C	A+B+C	A+B+C
	ANSI A 137-1:2012 (D.C.O.F.)	≥ 0,42	> 0,42	> 0,42	> 0,42	> 0,42
	AS/NZS 4586:2013	SRV : 35 - 44	-	P3 WET	P4 WET	P4 WET
BS 7976 - 2:2002	>36	-	+36 WET	+36 WET	+36 WET	

\* Valori medi di produzione / Average production values

VARIAZIONE CROMATICA SHADE VARIATION	V2	 aspetto uniforme uniform appearance V1	 lieve variazione slight variation V2	 moderata variazione moderate variation V3	 forte variazione substantial variation V4
---	----	--	--	--	---

# P.tech

ABK PRESENTA P.TECH, LA SUPERFICIE CERAMICA CHE CONIUGA PERFETTAMENTE MORBIDEZZA E RESISTENZA ALLO SCIVOLAMENTO.

La ricerca e gli investimenti continui per migliorare l'estetica e le qualità tecniche del prodotto, hanno portato ABK a sviluppare la nuovissima tecnologia P.TECH, che migliora le performance anti-scivolo dei pavimenti, mantenendo inalterati i valori di resistenza meccanica del gres porcellanato, con una finitura estremamente piacevole al tatto e facile da pulire. P.TECH non è un trattamento di superficie, ma è la sintesi di un innovativo processo produttivo che coinvolge la selezione delle materie prime, la fase di pressatura e quella di cottura. Queste superfici, che rispondono positivamente ai parametri di attrito imposti dalle normative più severe AS/NZS 4586:2013 (Australian pendulum test) e BS 7976 - 2:2002 (British pendulum test), si igienizzano con acqua e comuni detergenti, pertanto costituiscono la scelta perfetta anche per i progetti di aree pubbliche o commerciali, comprese le aree outdoor, wellness & hospitality. I prodotti P.TECH per la loro versatilità permettono inoltre di utilizzare la stessa superficie in spazi differenti, ma comunicanti, come ad esempio interni ed esterni, garantendo la massima flessibilità progettuale.

ABK IS PRESENTING P.TECH, THE CERAMIC SURFACE THAT COMBINES A SOFT TOUCH WITH SLIP RESISTANCE.

Ongoing research and investments aimed at improving the aesthetic and technical qualities of products has enabled ABK to develop the innovative P.TECH technology, which improves the slip resistance of floors while delivering the renowned mechanical strength of porcelain stoneware and a finish that is both extremely pleasant to the touch and easy to clean. P.TECH is not a surface treatment but the result of an innovative production process that combines raw material selection with the pressing and firing phases. These surfaces come up to the strictest standards in terms of coefficient of friction such as the AS/NZS 4586:2013 (Australian pendulum test) and BS 7976 - 2:2002 (British pendulum test) and can be cleaned using water and ordinary cleaning agents, making them the ideal choice for projects in public or commercial areas such as outdoor, wellness and hospitality spaces. P.TECH products are also sufficiently versatile to enable the same surface to be used in different but communicating spaces such as interiors and exteriors, thereby guaranteeing the maximum design flexibility.

Le caratteristiche di superficie e le tonalità dei prodotti ceramici illustrati in questo catalogo sono da ritenersi puramente indicative. Optical features and color shades of ceramic materials illustrated in this catalogue are to be regarded as mere indications.

Thanks to  
Baxter  
Fontana Arte  
Gervasoni  
Lando  
Karman  
Flaminia  
Poliform

Marketing ABK Group  
234

ABK

TROPICAL  
TILE & MARBLE



**ABK**

EMOZIONI IN SUPERFICIE

WE  
ARE **ABK**  
GROUP

  
**TROPICAL**  
TILE & MARBLE